

FC-Series

Fixed Network Thermal Cameras



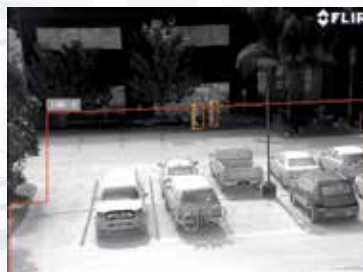
FC-Series

FC-Series thermal network cameras now include on-board video analytics to create a powerful, standalone edge intrusion detection device. Capable of classifying human or vehicle intrusions, FC-Series cameras provide reliable detection and flexible alarming options.

Because FLIR understands that you need cameras for the real world, FC-Series cameras are qualified beyond industry standard for survivability, and are backed by FLIR's unparalleled 3-year system warranty and 10-year detector warranty.

Features

- On-board video analytics with ability to classify human or vehicle intrusions
- Multiple alarming notification options, including email, digital outputs or VMS alarms
- Ideal for use with third-party analytics, including those provided by FLIR's partners around the world
- Camera configuration via web or mobile apps
- Simultaneous IP and analog video outputs
- Open IP standards for plug-and-play integration; ONVIF conformant
- Digital Detail Enhancement (DDE) & Wide Dynamic Range Thermal image processing combine to give you optimal images in dynamic thermal scenes



FC-Series thermal network cameras can detect human or vehicle intrusions and alert you in multiple ways, including by email, digital outputs or VMS alarms.



The World's **Sixth Sense**™

Specifications

Camera Model	FC-Series	FC-Series
Thermal Camera		
Array Format (NTSC)	320 x 240	640 x 480
Detector Type	Long-Life, Uncooled VOx Microbolometer	
Effective Resolution	76,800	307,200
Pixel Pitch	25 µm	17 µm
Field of View	63° × 50° (FC-363; 7.5 mm) 48° × 39° (FC-348; 9 mm) 34° × 28° (FC-334; 13 mm) 24° × 19° (FC-324; 19 mm) 13° × 10° (FC-313; 35 mm) 9° × 7° (FC-309; 35 mm, 17 µm)	90° × 69° (FC-690; 7.5 mm) 69° × 56° (FC-669; 9 mm) 45° × 37° (FC-645; 13 mm) 32° × 26° (FC-632; 19 mm) 18° × 14° (FC-618; 35 mm)
Zoom	Continuous E-zoom, up to 4X	
Spectral Range	7.5 µm to 13.5 µm	
Focus Range	Athermalized, focus-free	
Outputs		
Composite Video NTSC or PAL	Yes; Hybrid system with IP & Analog video	
Video over Ethernet	Two independent channels of H.264, MPEG-4 & M-JPEG (see website for full details)	
Streaming Resolution	D1: 720x576, 4CIF: 704x576, Native: 640x512, Q-Native: 320x256, CIF: 352x288, QCIF: 176x144	
Control		
Ethernet	Yes	
External Analytics Compatible	Yes	
Network APIs	Nexus SDK for comprehensive system control and integration Nexus CGI for http command interfaces ONVIF 2.0 Profile S	
General		
Weight	4.0 lb (1.8 kg) w/o sun shield 4.8 lb (2.2 kg) w/sun shield	
Dimensions (L, W, H)	9.2" x 4.6" x 4.1" w/o sun shield 10.8" x 5.4" x 4.4" w/ sun shield	
Input Voltage (Consult product manuals for feature/ power requirements)	11-44 VDC (no lens heaters) 16-44 VDC (w/lens heaters) 14-32 VAC (no lens heaters) 16-32 VAC (w/lens heaters) PoE (IEEE 802.3af-2003) PoE+ (IEEE 802.3at-2009)	
Input Voltage	12-38 VAC 11-56 VDC PoE (IEEE 802.3af-2003) PoE+ (IEEE 802.3at-2009)	
Power Consumption (Consult product manuals for detailed power requirements)	24 VDC 5 W nominal 21 W peak (w/heaters) 24 VAC 8 VA nominal 29 VA peak (w/heaters)	
Approvals	FCC Part15, Subpart B, Class B CE: EN 55022 Class B	
Surge Immunity on AC Power Lines	EN 55024: 2010 and 55022: 2010 to 4.0kV on AC aux power lines	
Surge Immunity on Signal Lines	EN 55024: 2010 and 55022: 2010 to 4.0kV	
Environmental		
IP Rating	IP66 & IP67	
Operating Temperature Range	-50°C to 70°C (continuous operation) -40°C to 70°C (cold start)	
Storage Temperature Range	-55°C to 85°C	
Humidity	0-95% relative	
Shock	MIL-STD-810F "Transportation"	
Vibe	IEC 60068-2-27	
Image Optimization Features		
Thermal AGC Modes	Auto AGC, Manual AGC, Plateau Equalization AGC, Linear AGC, Auto Dynamic Detail Enhancement (DDE), Max Gain Setting	
Thermal AGC Region of Interest (ROI)	Default, Presets and User definable to insure optimal image quality on subjects of interest	
Image Uniformity Optimization	Automatic Flat Field Correction (FFC) - Thermal and Temporal Triggers	



SANTA BARBARA

FLIR Systems, Inc.
70 Castilian Drive
Goleta, CA 93117
USA
PH: +1 805.964.9797
FX: +1 805.685.2711

PORTLAND Corporate Headquarters

FLIR Systems, Inc.
27700 SW Parkway Avenue
Wilsonville, OR 97070
USA
PH: +1 877.773.3547
FX: +1 503.498.3153

EUROPE

FLIR Commercial Systems
Luxemburgstraat 2
2321 Meer
Belgium
PH: +32 (0) 3665 5100
FX: +32 (0) 3303 5624

Equipment described herein may require US Government authorization for export purposes. Diversion contrary to US law is prohibited. Imagery used for illustration purposes only.

©2014 FLIR Systems, Inc. Specifications are subject to change without notice, check our website: www.flir.com. 8115 Created 07/14

www.flirsecurity.com/pro